

These samples "look" poor because we made the file size small in order to make them easier to download.
 The music you order from us would be the professional quality you are used to.

FlatRock

All Instruments Are Created Equal™

Hamilton

E♭ SAXOPHONES

The Notes You Need:

F#4 G B^b B[#] C D E F#4 G

funky
 ♩ = 90

Melody

TOP Riff
 BOTTOM

Bass Line

Melody

TOP Riff
 BOTTOM

Bass Line

Melody

TOP Riff
 BOTTOM

Bass Line

FLUTE

M.S. Blues

All Instruments Are Created Equal™

Hamilton

The Notes You Need:

B^b C D^b D[#] E^b F G A^b A[#] B^b

jazz, swing 8^{ths}
♩ = 110

Melody

TOP BOTTOM Riff

Bass Line

f

mf

f

Melody

TOP BOTTOM Riff

Bass Line

5

Melody

TOP BOTTOM Riff

Bass Line

9

PERCUSSION

Joe's Tune

All Instruments Are Created Equal™

boogaloo

Hamilton

$\text{♩} = 100$

Musical score for the first system of 'Joe's Tune'. It features five staves: Melody, Riff (TOP and BOTTOM), Bass Line, Snare Drum/Bass Drum, and Sus. Cymbal/Cow Bell. The key signature is B-flat major (two flats) and the time signature is 4/4. The tempo is marked 'boogaloo' with a quarter note equal to 100. The Melody staff starts with a dynamic of *f*. The Riff staff starts with a dynamic of *mf*. The Bass Line staff starts with a dynamic of *f*. The Snare Drum and Bass Drum parts are marked with accents and a *simile* instruction. The Sus. Cymbal and Cow Bell parts are marked with accents and a *simile* instruction.

Musical score for the second system of 'Joe's Tune'. It features five staves: Melody, Riff (TOP and BOTTOM), Bass Line, Snare Drum/Bass Drum, and Sus. Cymbal/Cow Bell. The key signature is B-flat major (two flats) and the time signature is 4/4. The Melody staff has a first ending bracket labeled '1.' at the end. The Riff staff has a first ending bracket labeled '1.' at the end. The Bass Line staff has a first ending bracket labeled '1.' at the end. The Snare Drum and Bass Drum parts have a first ending bracket labeled '1.' at the end. The Sus. Cymbal and Cow Bell parts have a first ending bracket labeled '1.' at the end. There are rehearsal marks '5' at the beginning of the Snare Drum/Bass Drum and Sus. Cymbal/Cow Bell staves.

M.S. Blues

Performance Arrangement

Hamilton

TROMBONE
BARITONE B.C.
BASSOON
STRING BASS

B \flat Blues Scale for Solos: 

jazz,
swing 8^{ths}
♩ = 110


mf *simile*

A

7 *f*



13


B \S


19 *simile*

to coda Φ

26

C $\Delta \Delta \Delta$ *optional solos* $\Delta \Delta \Delta$ $\Delta \Delta \Delta$ $\Delta \Delta \Delta$

33 *mp*

Δ Δ $\Delta \Delta \Delta$ $\Delta \Delta \Delta \Delta$ **D.S. at Coda** (after last solo)

40 *last time only*

Φ *coda*

45 *p* *f*


51 *ff*

v2.

Copyright © 1997 by
HamilTunes, B.M.I.
All Rights Reserved
www.hamiltunes.org

Joe's Tune

Performance Arrangement

Hamilton

TENOR SAX

"C" Blues Scale for Solos:



boogaloo

$\text{♩} = 100$



A



9



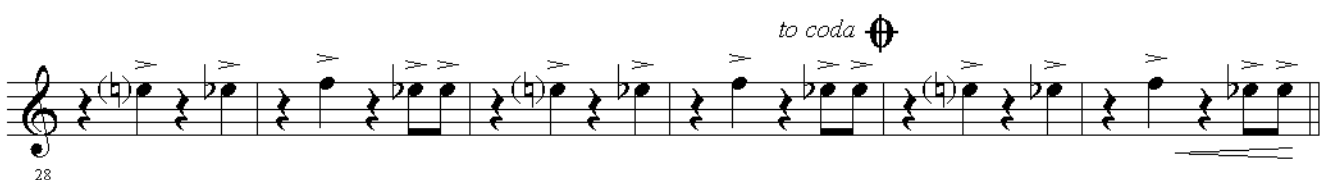
13



18



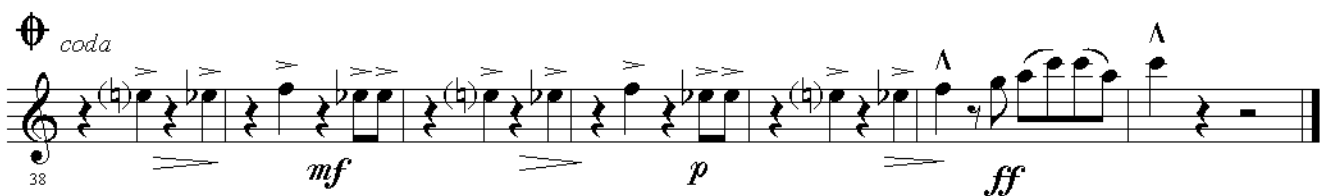
23



28



34



38

FlatRock

Performance Arrangement

Hamilton

TRUMPET 1

"C" Blues Scale for Solos: 

funky ♩.90

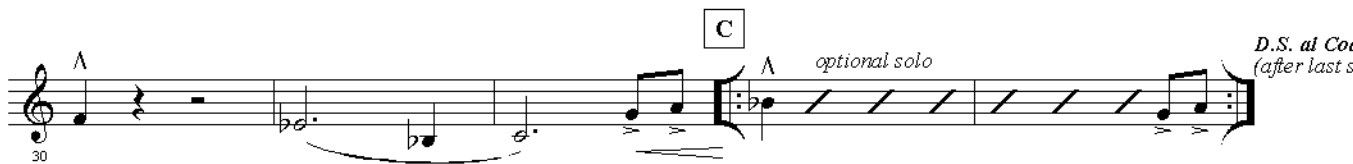
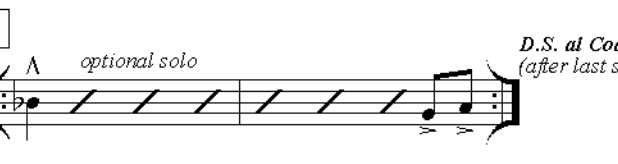

mf

A 

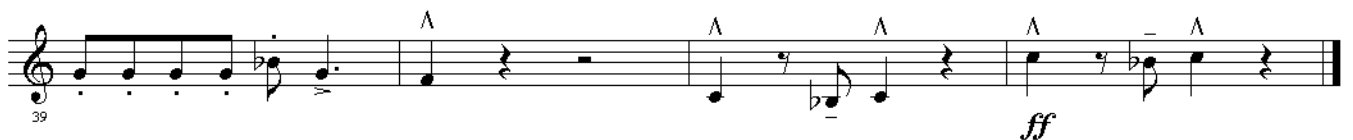


B 
f


to coda 

C 
optional solo 
D.S. al Coda (after last solo)


coda 


ff